

www.finditinbirmingham.com

Welcome to finditinbirmingham's
breakfast meeting 'The Transport Trade'

Thursday 5 July 2012

R. Shariat

Project Manager at Finditinbirmingham

Finditinbirmingham Breakfast Meeting 5 July 2012

**David Bull
Director**

Sustainability Transportation & Partnerships

- **TRANSPORTATION PROGRAMME**
- **MAINTENANCE**
- **NEW BUILD**

MAINTENANCE

- **25 year contract with Amey - May 2010**
- **Significant investment over 5 years**
- **2 years of investment completed, 3 years remaining**
- **Includes – carriageway reconstruction**
- **Upgrade of street lighting & signals etc**

NEW BUILD

- **Capital Programme**
Integrated Transport Block, small to medium works
Budget for 2012/13 circa £5.9m
- **Major Schemes e.g. Chester Road**
Local Sustainable Transport Funds: 3 year programme
35 million approved by the Government for the whole of the West Midlands, involve physical infrastructure improvements, smart choices, technology schemes
to be delivered by West Midlands Districts and Centro
- **Works in partnership with the Birmingham Airport**
Diverting A45
Runway Extension
- **Work in partnership with Centro**
Metro extension
Changes to infrastructure
- **Work in partnership with Network Rail & Centro**
New Street Station
- **Major and Minor S278 works**
Longbridge
Various private-sector led schemes

PROCUREMENT

- **£1M + scheme = Generally spot tender**
- **< 1M = Utilise Framework Contract**

PROCESS

- **Advertise in Find it in Birmingham**
- **OJEU Notices – circa £4.3m**

MIDLAND METRO

BUILDING A WORLD CLASS
METRO NETWORK FOR THE
REGION

Chris Haworth
Metro Delivery Programme

FinditinBirmingham
5th July 2012



Investment in Local Infrastructure

- Secured £136m Investment over 4 years
- Started in 2011
- Operational March 2015
- £75.4million DfT funding
- Centro are working on future routes



Why invest in *Metro*?

Investment in *Metro* will benefit:

- Consumers
- Environment
- Business
- Regeneration



Impact of *Metro* Investment

Consumers

- Improves journey times / increased frequencies
- Improved quality / comfort / capacity
- Social inclusion
- Improved safety
- Provides access to wider employment and leisure opportunities



Impact of *Metro* Investment

Environment

- Reduced car emissions
- Better air quality
- Health benefits



Impact of *Metro* Investment

Business Connectivity

- Access to wider labour market
- Cluster of economic growth improving business productivity
- Reduced business cost
- Greater footfall / more demand



Impact of *Metro* Investment

Regeneration

- Transport constraints on job creation removed / reduced
- More attractive place to do business
- Better place to live
- Attractive place to shop



Existing *Metro* Line One

- Wolverhampton to Birmingham Snow Hill
- 21km long – 23 stops along the way
- End to End journey time of 35 minutes
- Operational since March 1999
- Patronage 5m / annum
- Operated by National Express



Metro Expansion Plans

Early focus

- **Birmingham City Centre Extension**
- Wolverhampton Interchange
- Further extension to Paradise Circus
- HS2 link
- Wednesbury to Brierley Hill





- Key**
- Suburban Heavy Rail
 - Midland Metro Light rail / Tram - Inland
 - Ultra Light Rail
 - Bus Rapid Transit (pre-pose are indicative)
 - Interchange Station / Stop
 - Station with regular national/regional rail services
 - Existing / Potential Strategic Park and Ride location

Birmingham City Centre Extension (BCCE)

Powers

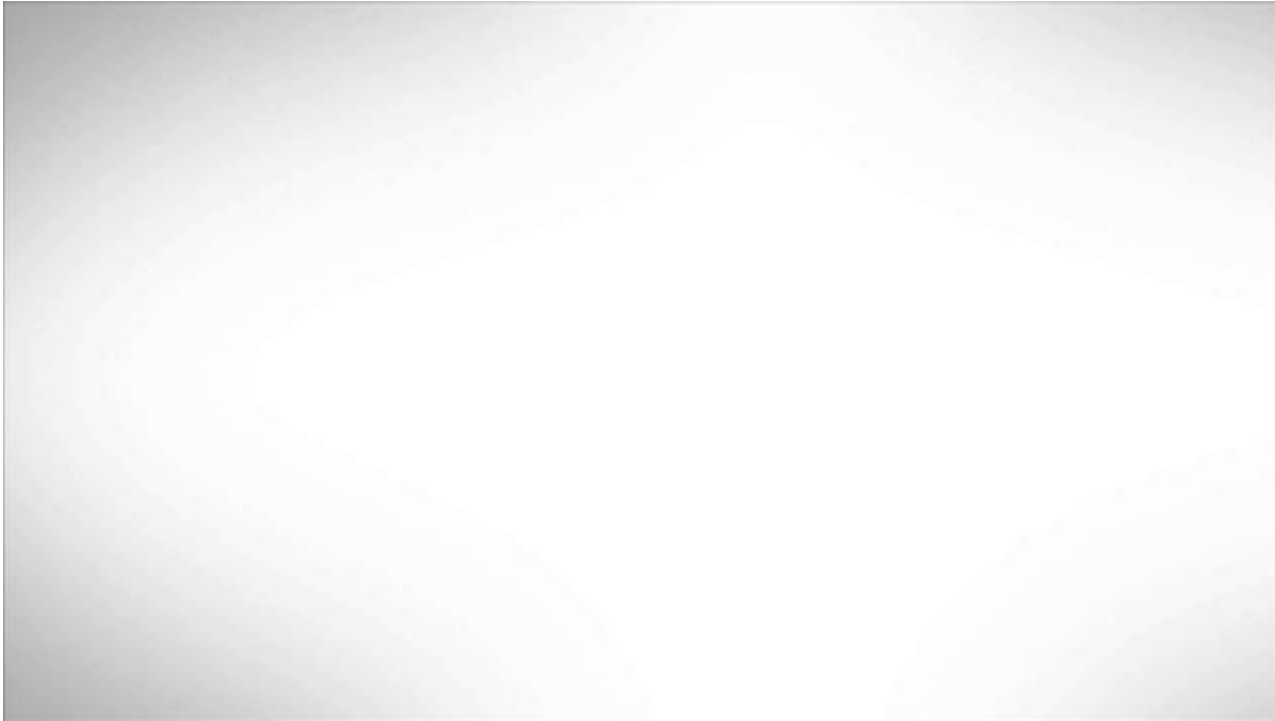
- TWA Powers granted in 2005
- TWA Powers preserved in 2010

Funding

- Original Business Case Submission - 2006
- DfT Funding Programme Entry - May 2010
- Announced in Comprehensive Spending Review statement 20th October 2010
- Condition Approval – Feb 2011
- Final Approval – Feb 2012
- Result £75.4m DfT funding
- Local contribution £47.3m (plus interchange bus scheme investment of £14m)



BCCE – CGI Fly through



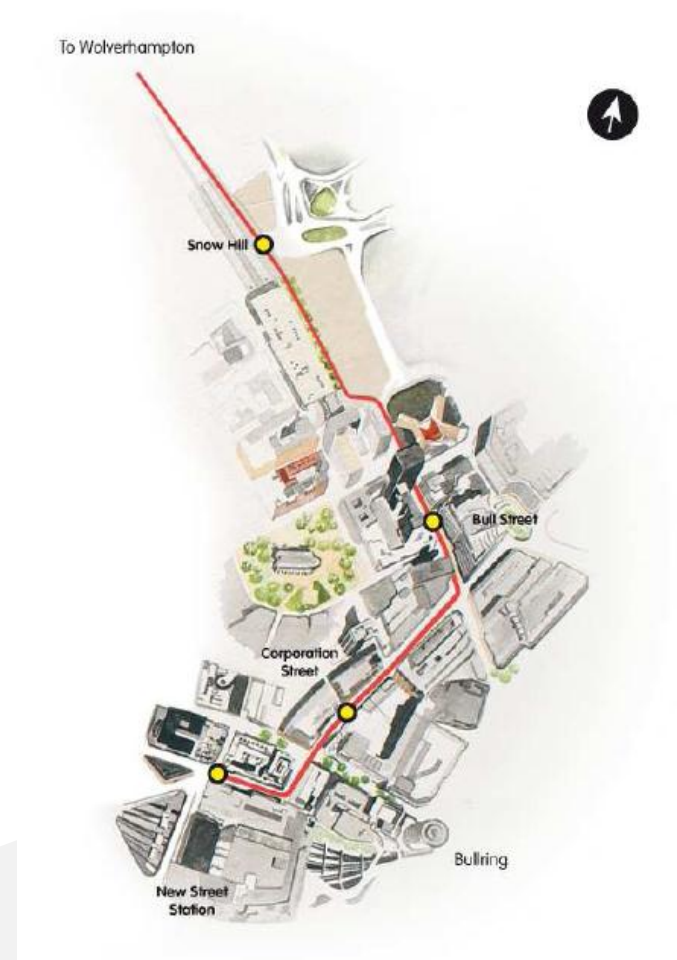
BCCE – Programme Development

- City Centre Interchange
- Advanced Utility Diversions
- Depot Extension and Line One Upgrade
- New Tram Fleet
- Birmingham City Extension



BCCE Route

- 1.4km long
- Connectivity – Snow Hill to New Street
- 4 new stops
- Provide links across the city centre and beyond to national destinations and into Jewellery Quarter and the Black Country
- Balfour Beatty appointed as Preferred Bidder
- Anticipated Contract Award Autumn 2012
- Construction due to start Spring 2013
- Operational Spring 2015



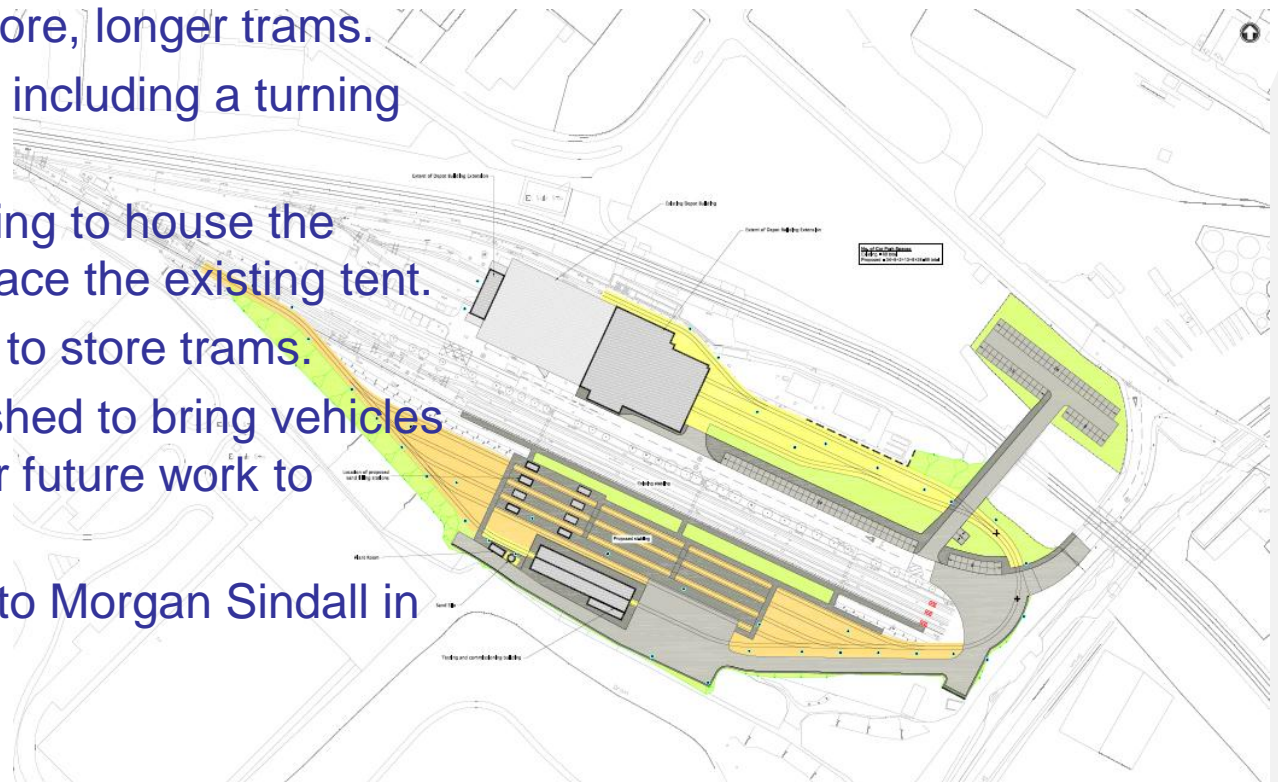
Fleet replacement

- New fleet of trams
- Larger fleet of 20 vehicles
- Longer, higher capacity vehicles
- Allows 6 minute headway service throughout the day
- Contract Awarded to CAF on 15th March 2012



Depot expansion

- Expand the depot to accommodate the new tram fleet – more, longer trams.
- Additional facilities including a turning loop.
- A permanent building to house the wheel lathe to replace the existing tent.
- Additional stabling to store trams.
- A commissioning shed to bring vehicles into service and for future work to trams.
- Contract awarded to Morgan Sindall in February 2012



BCCE Key Design Features

- Creation of an outstanding pedestrian environment
- Walkable City / Vision for Movement
- Low height kerbs
- Granite footways
- Imprinted concrete highway
- Creation of high quality public realm at nodes
- “Signature” tram stop structures



Summary

- Benefits of Metro – delivering economic growth, combating climate change and improving quality of life in the Region
- Building on the success of Line One
- £136m new investment on BCCE, 20 New Trams and Depot extension
- BCCE Operational Spring 2015
- Wider future vision – HS2, Black Country Spine, Wolverhampton Interchange, extensions to Paradise Circus





centro

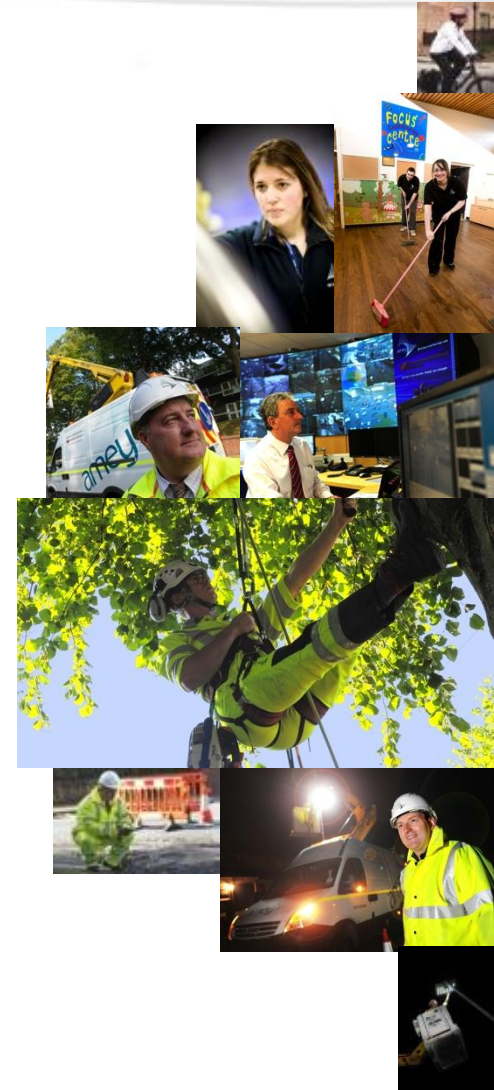
transforming public transport

MIDLAND METRO EXPANSION WHERE NEXT?

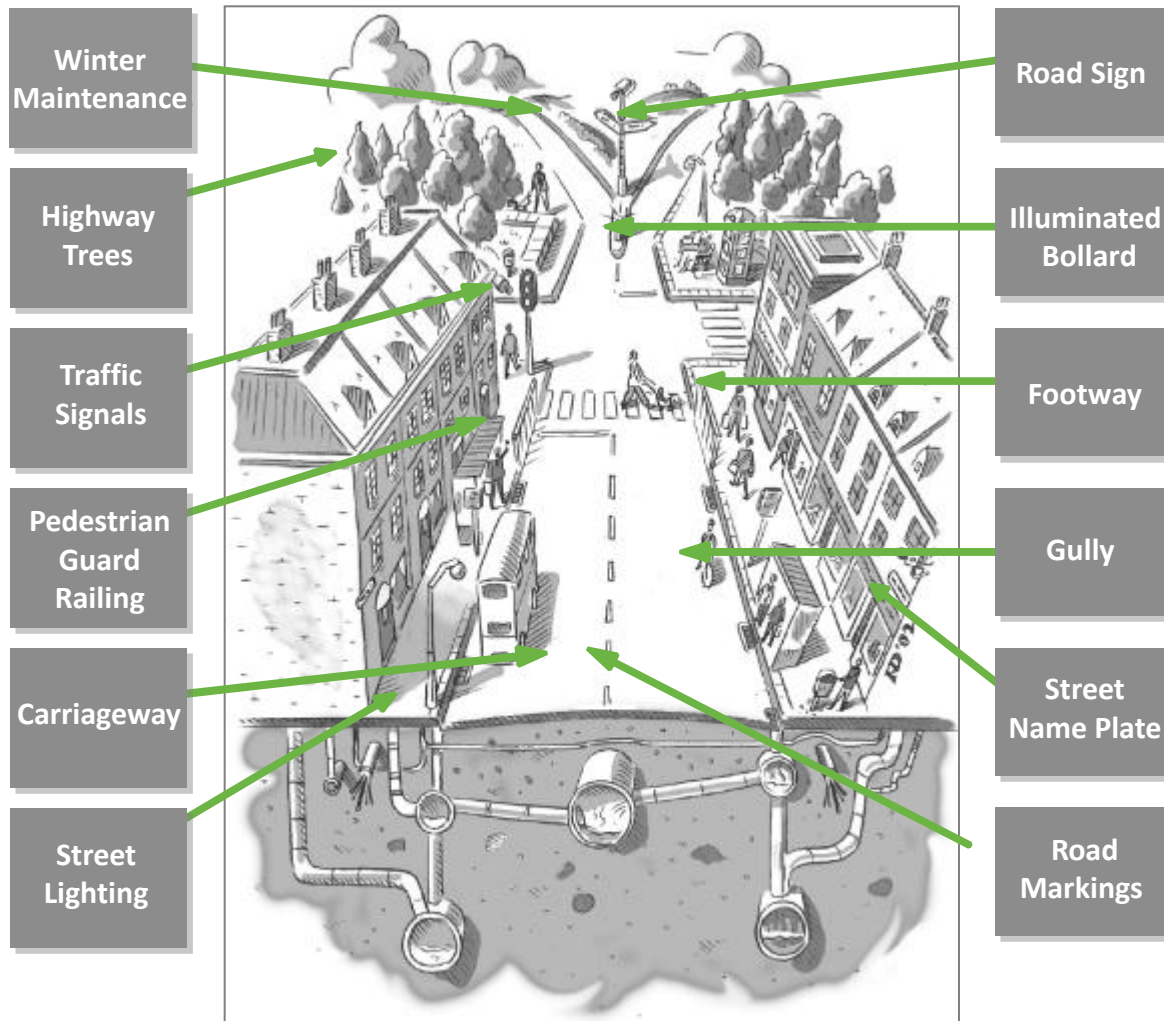
THANK YOU FOR LISTENING

Birmingham Highways Service - overview

- Largest Local Authority highways contract in Europe
- 25-year programme worth c£2.7 billion over 25 years
- As strategic partner of the city, we interface with a range of key stakeholders:
 - BCC – highways design and capital works, digital infrastructure, energy and low carbon projects
 - Statutory Undertakers works
 - Developers/Major Projects
 - Centro – Amey as design and delivery partner, highways interface, future initiatives
- Collaborative relationships with the objective of delivering joined up improvements across the City



Birmingham Highways - what's included?



Recruiting local people

- Working with BCC, Future Jobs Fund and Jobcentre Plus to create work and training opportunities for young and long-term unemployed people
- 72 long-term unemployed people taken on, 58 permanent positions and 14 seasonal positions
- 21 apprentices taken on, 8 more in September
- 20% of the workforce taken on through the recruitment partnership targeting long-term unemployed and young people for apprentice schemes
- All apprentices have access to Duke of Edinburgh's Award

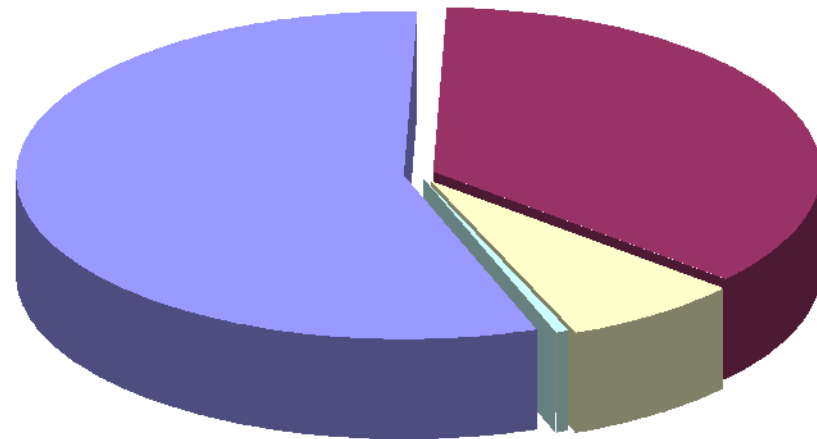


Birmingham Highways - working with local suppliers

Location	Total %
Birmingham	31.5%
West Midlands	49.5%
Other	16%
East Midlands	3%
Total	100%

- 81% of the total contract spend is focused with suppliers in Birmingham and the West Midlands
- Spend in the wider UK is for commodities such as Salt, Specialist services and street lighting materials

Birmingham PFI Supply Chain Partner



■ Birmingham
 ■ West Midlands
 ■ Other
 ■ East Midlands



Birmingham Highways - what's been achieved?



- 300 direct jobs created within Amey
- Further jobs created within our local supply chain partners
- 72 long-term unemployed recruited, including 20 Apprentices
- Significant energy and carbon reductions
- Sustainable techniques utilised to meet the carbon reduction agenda
- Majority of suppliers from within the local area
- Collaborative highways delivery across Birmingham



Opportunities with Amey

Amey continually bid, secure and deliver exciting transportation opportunities throughout the West Midlands area.

We look to work with innovative suppliers who can add value to our client solution.

To unlock these opportunities:

- Tell us about your business via our online Supplier Portal
 - Visit www.amey.co.uk and click on Contact us, then on the link to become a supplier
- Watch both national Contract Finder and the Finditinbirmingham Website where we will post our local and national opportunities
 - Visit www.contractsfinder.businesslink.gov.uk



Jack Kelly

External Communications Manager
National Express

Thank you for listening

Breakfast, exhibition and networking

If you have a pre-booked one-to-one scheduled
please ensure you are in the designated area